



THE *Soprano Basement*



3027



5



3 FULL



3

FEATURES

- Trayed Ceilings at Entry & Family
- Extensive Rec Room Downstairs
- Large Covered Deck & Patio
- Walk-in Closets w/Built-in Shelving
- Built-in Entertainment Center
- Drop-in Soaker Tub in Primary Bath
- Full Tiled Primary Walk-In Shower
- 8 X 5' Kitchen Island
- Large Pantry with Ample Shelving



Find more floorplans at WWW.HOMESBYPRODIGY.COM

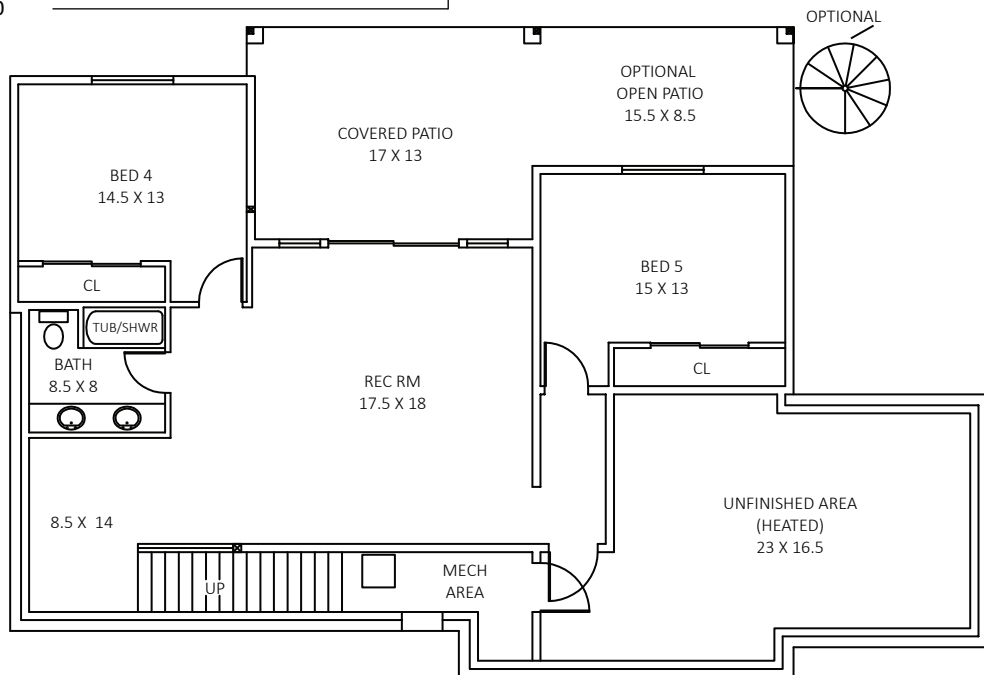
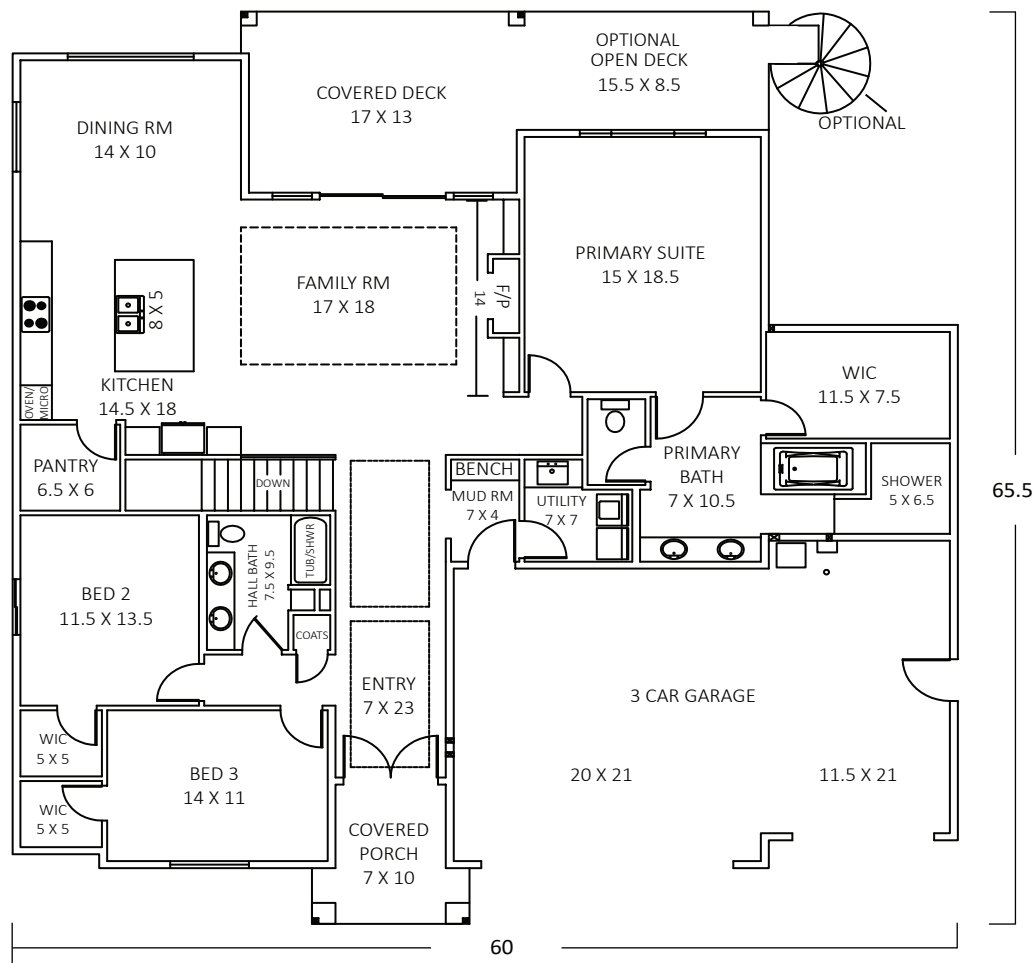
Photos are of previously built homes and may contain upgrades.



THE BEST EXPERIENCE

THE Soprano Basement

MAIN 2965 SF
BASEMENT 771 SF



Prodigy Homes, Inc. reserves the right to modify floor plans, designs and prices. Dimensions and square footage are approximate. Images and renderings may not be of the actual house.